



**Summary of
Parents Survey 2011**

Response Rate

	Handed Out	Received	%
2010	126	42	33%
2011	116	75	65%

Response to Questions

1. Very Satisfied | 2. Satisfied | 3. Fair | 4. Dissatisfied | 5. Very Dissatisfied

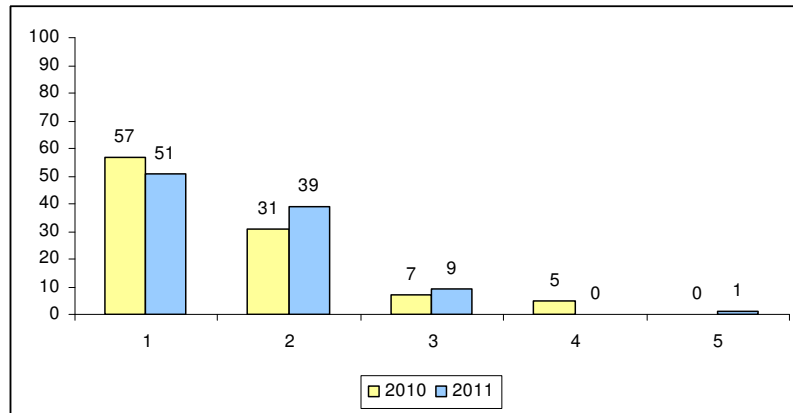
	2010 (%)					2011 (%)				
	1	2	3	4	5	1	2	3	4	5
SECTION ONE "Tell us how you feel"										
My child is happy to go to school	57	31	7	5	0	51	39	9	0	1
My child feels that he/she has friends at school	64	24	8	2	2	43	45	11	1	0
My child has work that is right for his/her ability	33	43	14	10	0	33	44	17	5	0
If worried my child feels that he/she can approach a member of staff	21	45	19	10	5	29	37	29	5	0
I feel that I can approach the school if I have a concern	43	31	17	2	7	52	28	13	5	1
I am pleased for my children to go to Paradise Primary	60	31	5	2	2	69	23	7	1	0
I feel that the school is well led and managed	24	43	19	7	7	39	35	24	3	0
The school takes on board the views of parents & pupils	26	31	31	7	5	26	44	24	6	0
SECTION TWO "Tell us about other aspects of school life"										
My child finds the teaching interesting	36	43	17	4	0	43	39	14	4	0
My child enjoys playtimes and lunch times	52	29	12	7	0	41	47	7	4	1

1. Very Satisfied | 2. Satisfied | 3. Fair | 4. Dissatisfied | 5. Very Dissatisfied

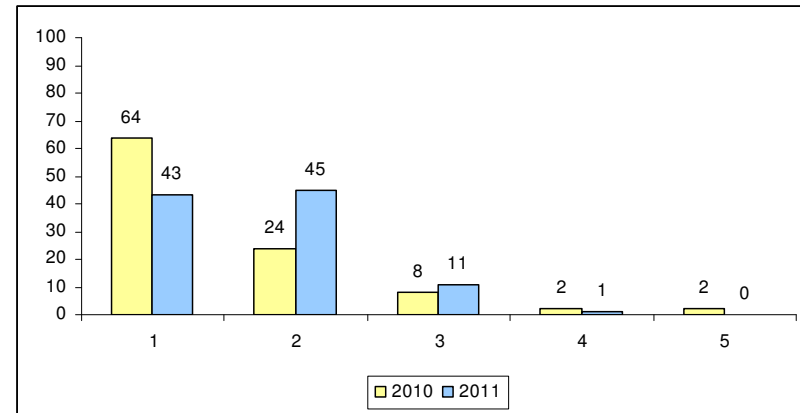
	2010 (%)					2011 (%)				
	1	2	3	4	5	1	2	3	4	5
My child finds school meals enjoyable	26	35	18	9	12	31	26	28	9	6
The school's Islamic values and attitudes have a positive effect on my child	34	41	15	5	5	44	36	19	1	0
The school helps to promote a healthy lifestyle	24	39	27	7	3	39	43	16	1	0
SECTION THREE "Tell us about the information that you receive from school"										
I receive clear information about my child's progress	24	29	24	17	6	23	39	31	7	1
I receive enough information about my child's progress	26	19	29	19	7	14	45	28	12	1
I am kept well informed of how to help my child's progress	26	19	24	21	10	15	41	28	13	3
I receive clear information about school events	29	50	12	5	4	41	43	15	0	1
SECTION FOUR "Tell us about standards at our school"										
I feel that the standards of work are high	22	46	24	3	5	29	51	18	1	1
I feel that the standards of care are high	17	44	29	7	3	26	49	16	7	1
I feel that the standards of behaviour are high	28	26	28	10	8	26	39	27	7	1
SECTION FIVE "Other issues that may concern you"										
My child brings home the correct amount of homework	32	35	28	5	0	40	41	13	5	0
I feel that the school uniform is appropriate	42	28	17	5	8	36	36	13	4	11
I am made to feel welcome when I come into the reception	32	33	30	3	2	32	38	19	8	3
I feel comfortable approaching the school if I have a problem, concern or suggestion	41	27	23	2	7	39	39	15	3	5
How effective would you rate the school overall	20	44	29	2	5	25	55	16	3	1

SECTION ONE “Tell us how you feel”

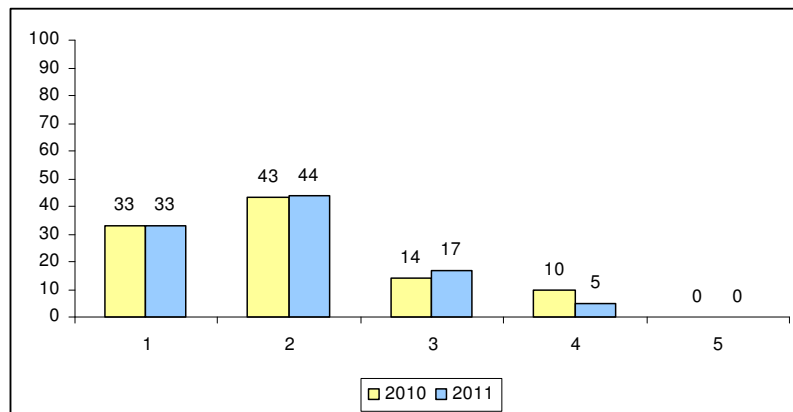
My child is happy to go to school



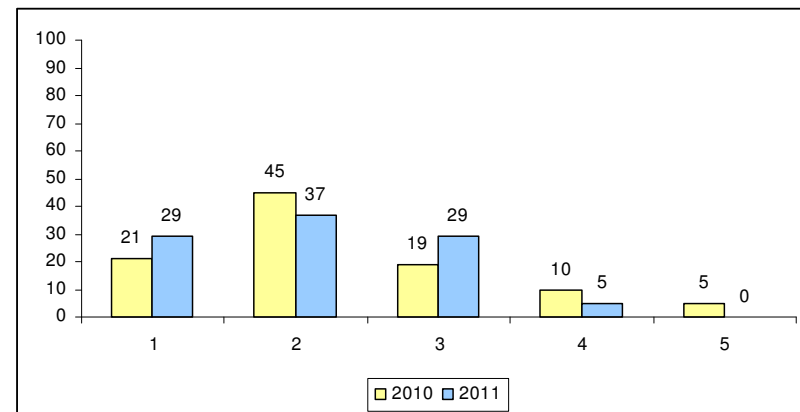
My child feels that he/she has friends at school



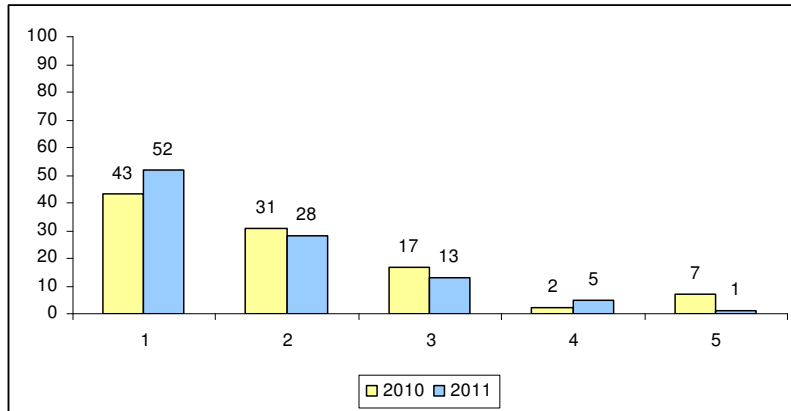
My child has work that is right for his/her ability



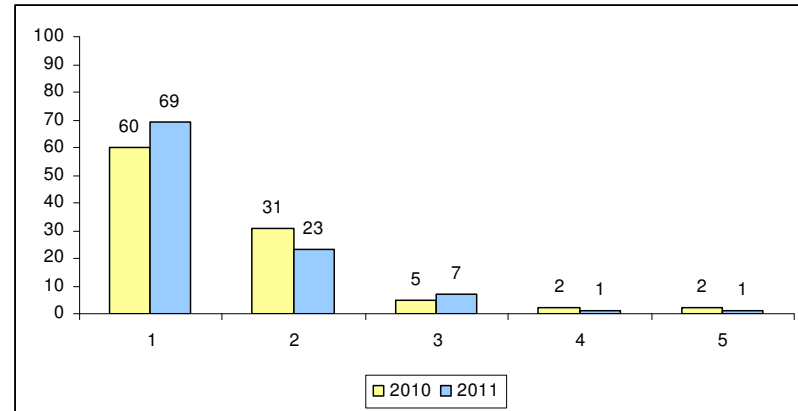
If worried my child feels that he/she can approach a member of staff



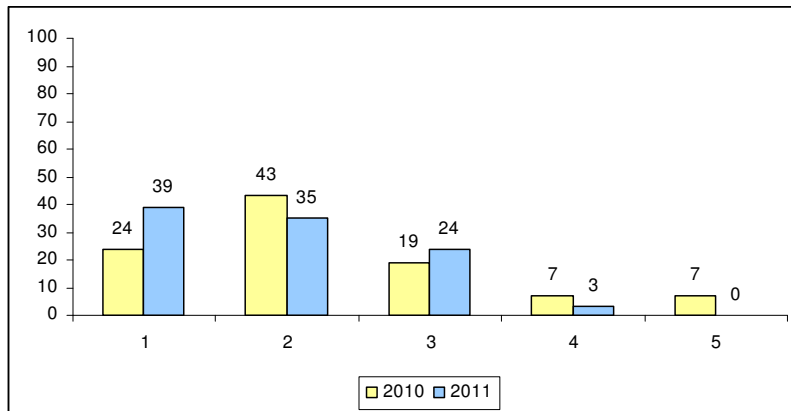
I feel that I can approach the school if I have a concern



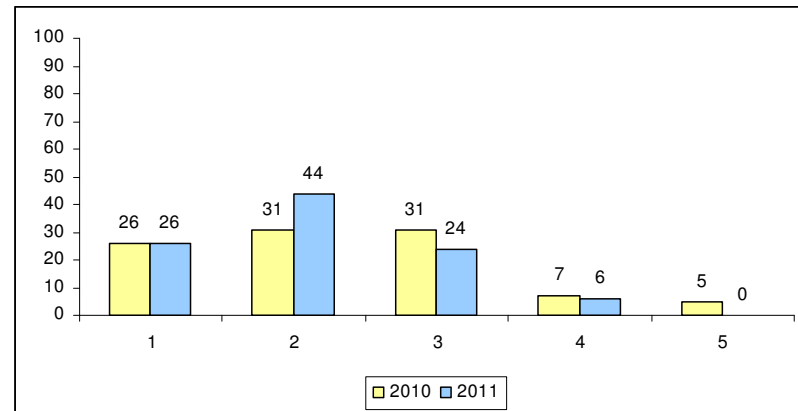
I am pleased for my children to go to Paradise Primary



I feel that the school is well led and managed

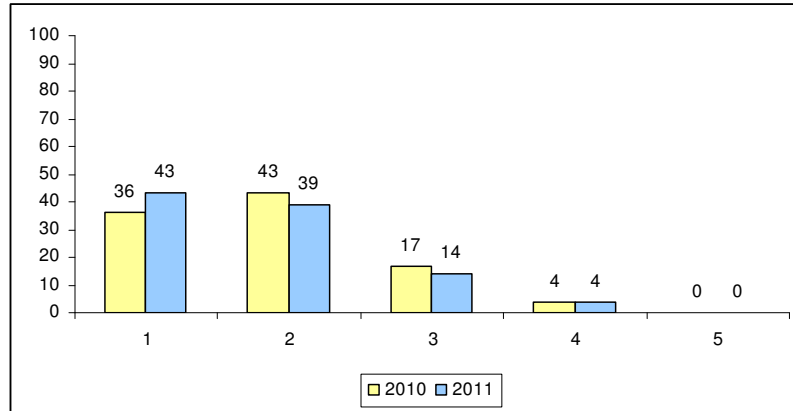


The school takes on board the views of parents and pupils

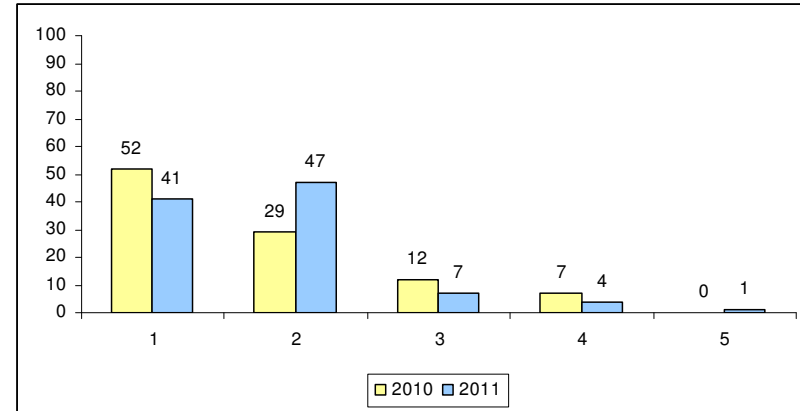


SECTION TWO “Tell us about other aspects of school life”

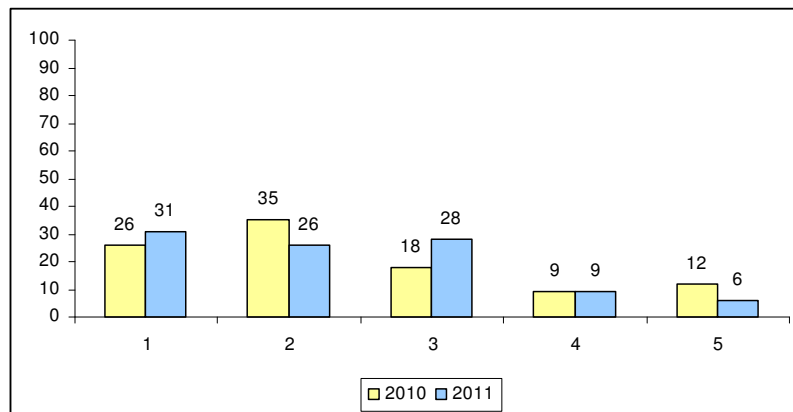
My child finds the teaching interesting



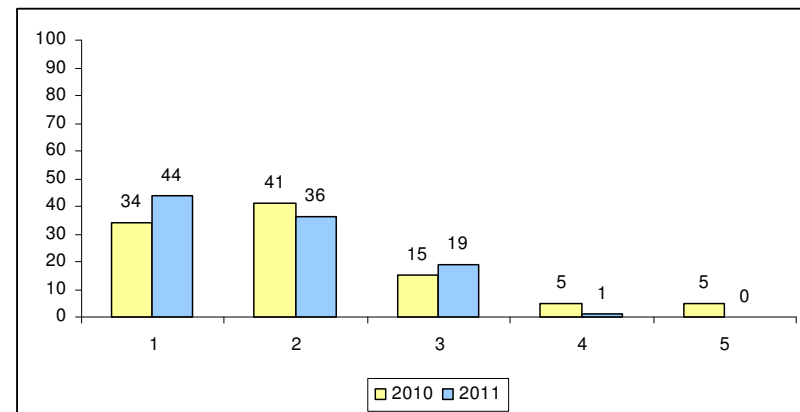
My child enjoys playtimes and lunch times



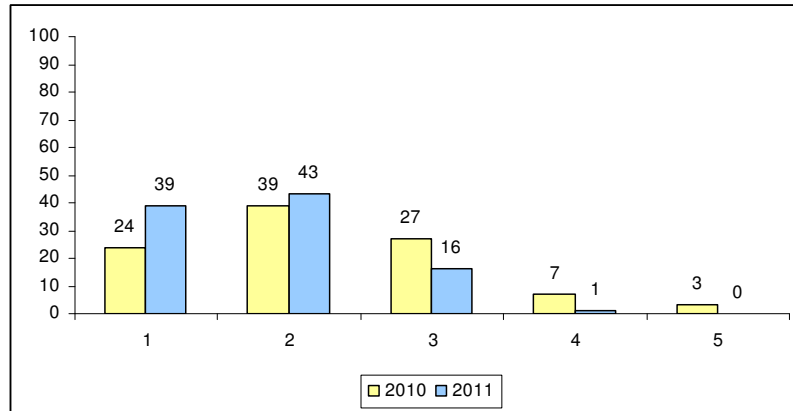
My child finds school meals enjoyable



The school’s Islamic values and attitudes have a positive effect on my child

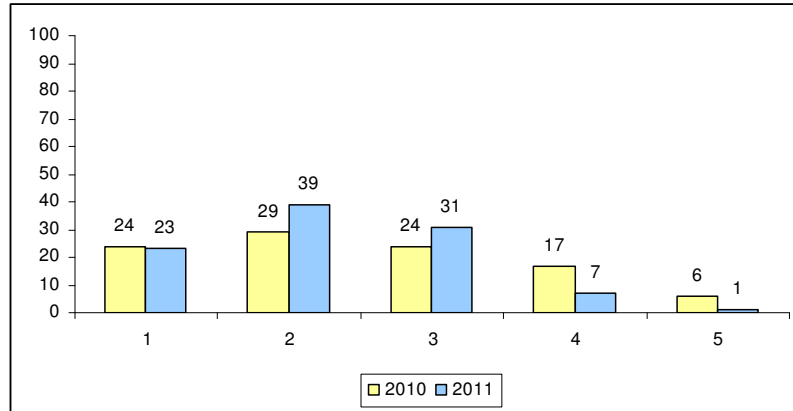


The school helps to promote a healthy lifestyle

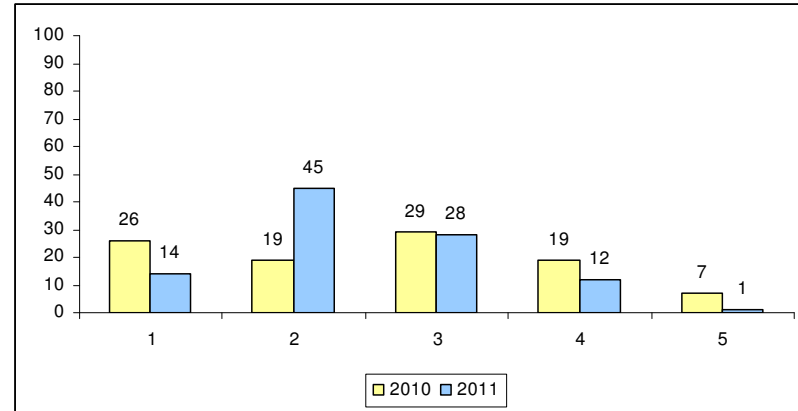


SECTION THREE “Tell us about the information that you receive from school”

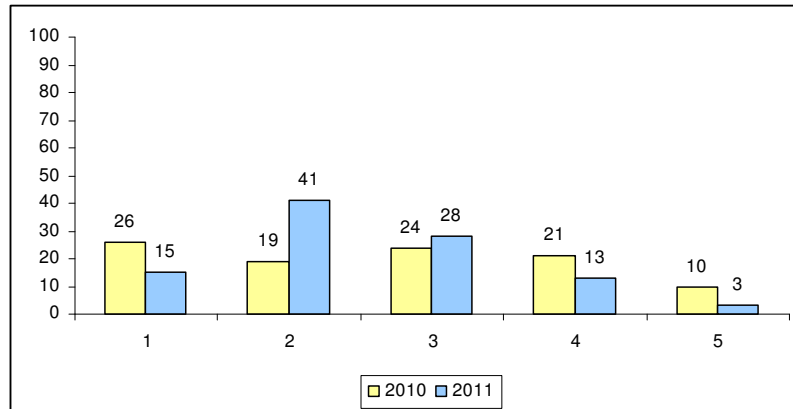
I receive clear information about my child’s progress



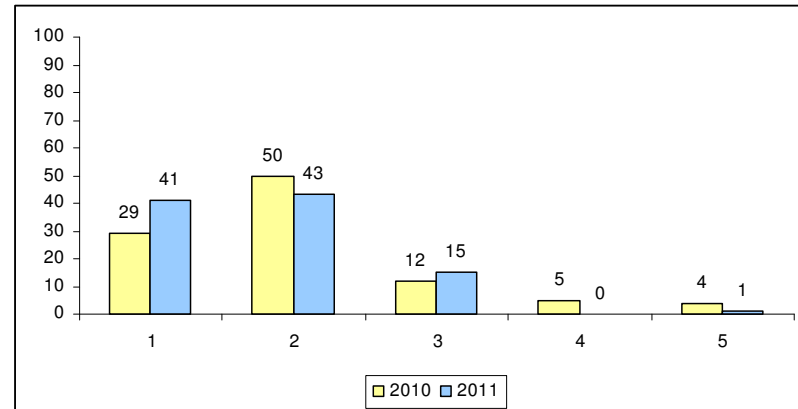
I receive enough information about my child’s progress



I am kept well informed of how to help my child’s progress

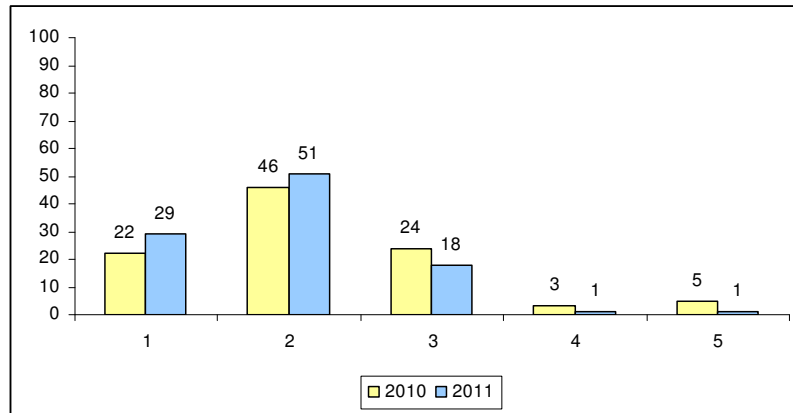


I receive clear information about school events

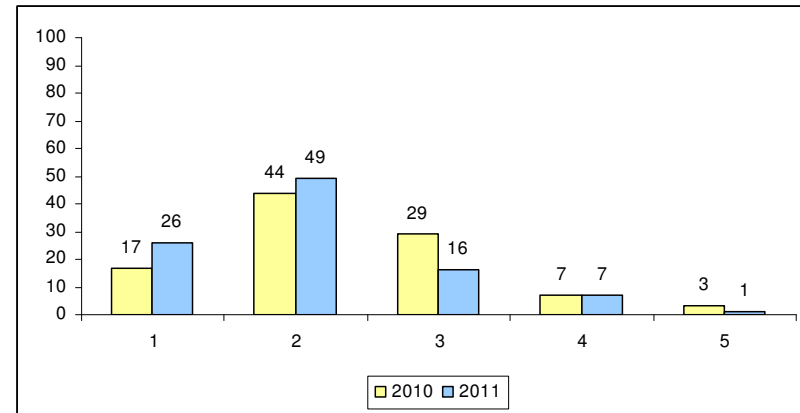


SECTION FOUR “Tell us about standards at our school”

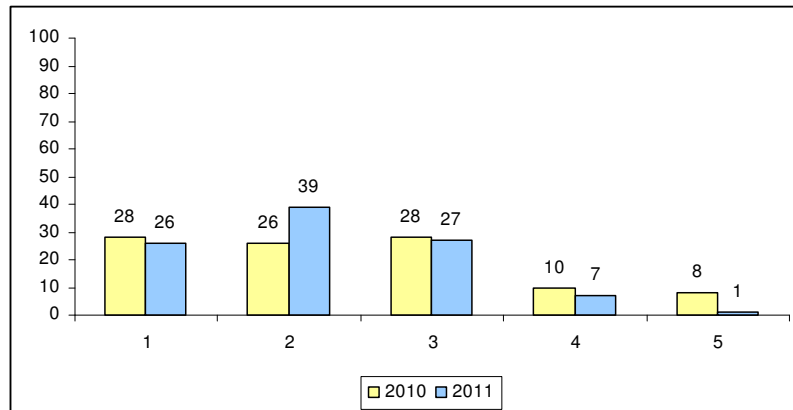
I feel that the standards of work are high



I feel that the standards of care are high

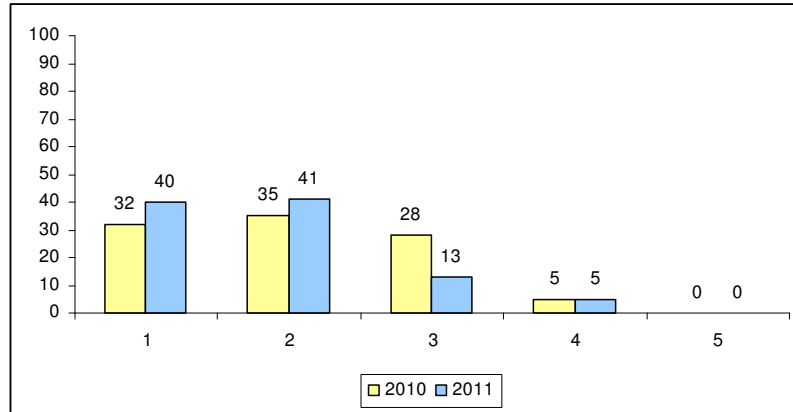


I feel that the standards of behaviour are high

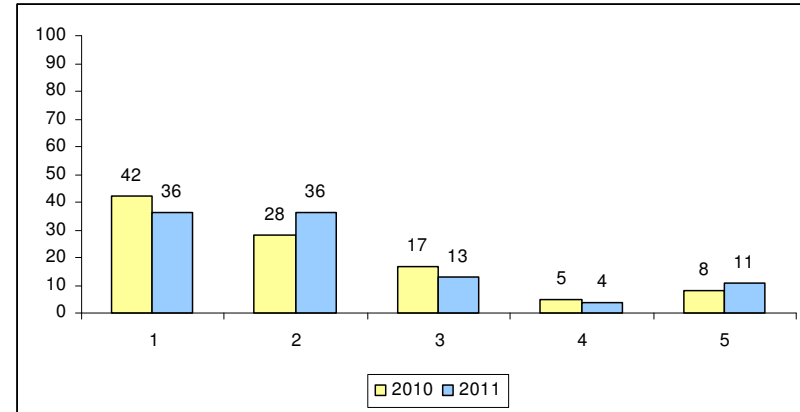


SECTION FIVE “ Other issues that may concern you”

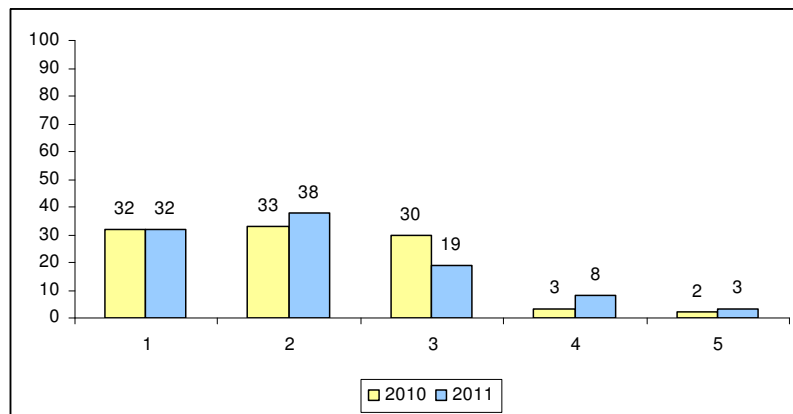
My child brings home the correct amount of homework



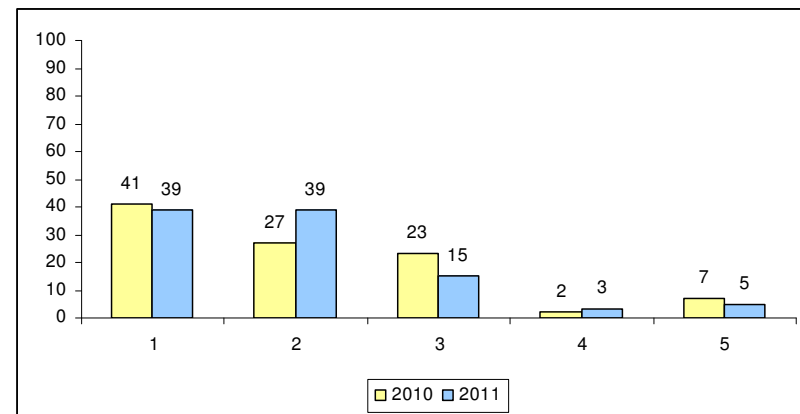
I feel that the school uniform is appropriate



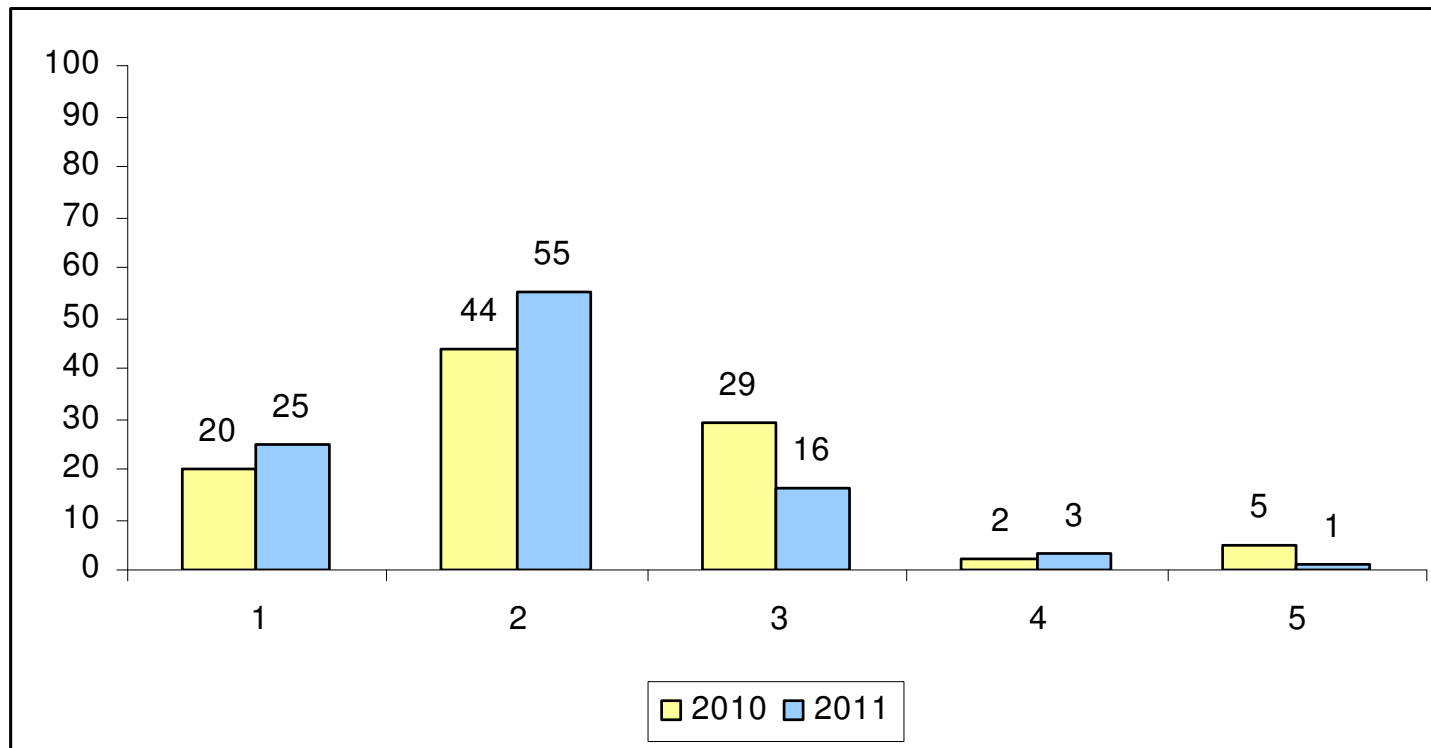
I am made to feel welcome when I come into the reception



I feel comfortable approaching the school if I have a problem, concern or suggestion

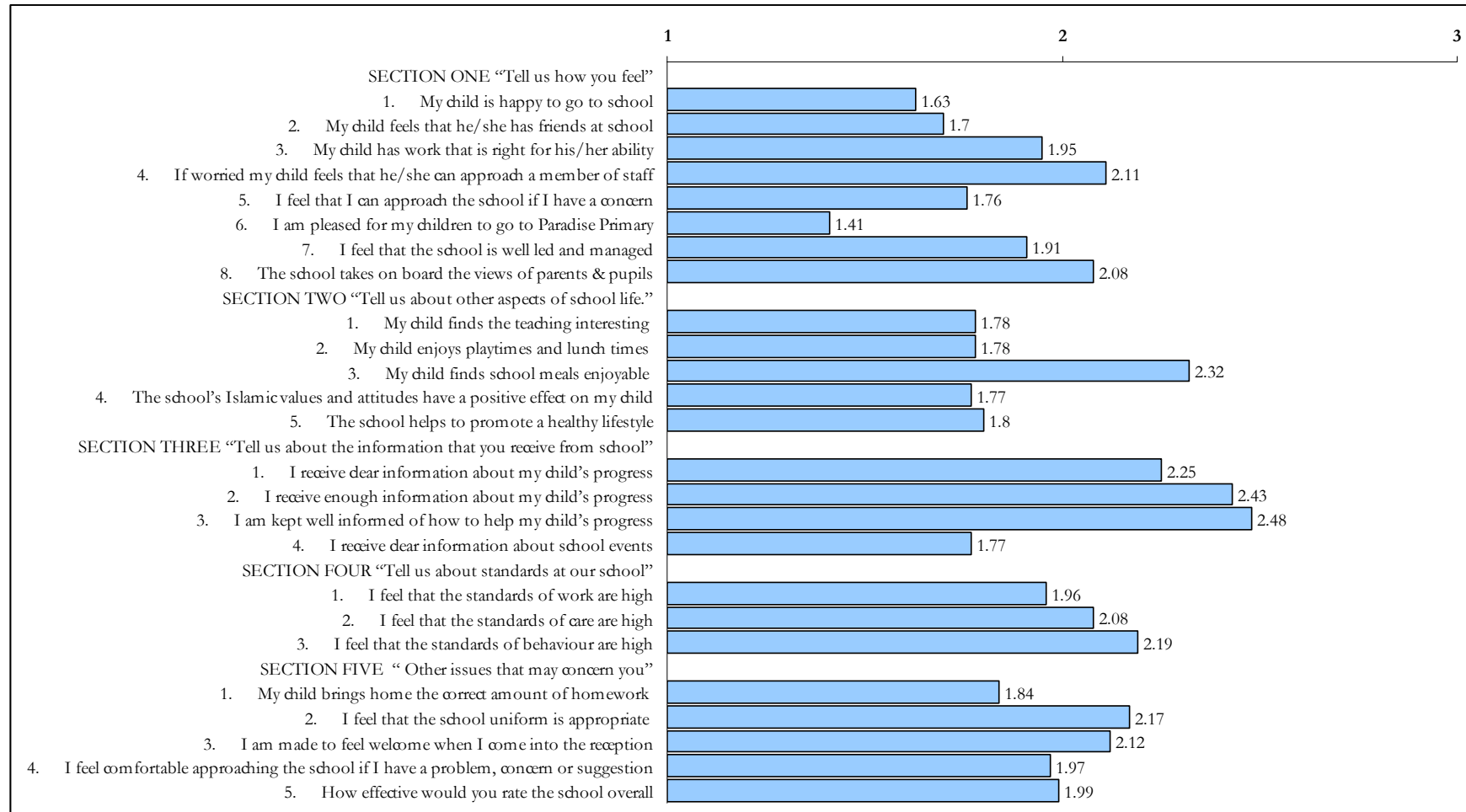


How effective would you rate the school overall



80% of parents are either 'very satisfied' or 'satisfied' with the school overall

AVERAGE RESPONSE TO EACH QUESTION (1 Very Satisfied – 5 Very Dissatisfied)



Percentage of people 'Very Satisfied' or 'Satisfied'



Key:

